

UltraLink



Remote KVM access over IP

High-quality video up to 1280 x 1024

Very easy to install and operate

Secure encrypted operation

Scaling, scrolling, and auto-size features

Compatible with most KVM switches

Available in single, dual, or quad models

Features and Benefits

- Available in single, dual, and quad models.
- Local KVM port for configuring the UltraLink and direct local access to the connected computer or KVM switch.
- Connect to a remote computer, server, or KVM switch directly, over a network, or by dial-up.
- Resolution - Up to 1280 x 1024 @ 85Hz.
- Solid-state embedded unit for maximum reliability.
- Compatible with all Rose Electronics KVM products and other KVM devices.
- Easy to install and configure.
- Scaling of computer images reduces the amount of data sent and permits fast screen updates over slow links (Modes: scaled, scrolled, or full-screen).
- Quad screen mode allows you to view four servers from one screen.
- Password security prevents unauthorized Unit and Viewer configuration.
- User ID and password required for remote access.
- Remote client application is simple to install, use, and requires no client licensing.
- Front panel shows power and currently connected input port (Network, serial, or local KVM).
- Free base firmware upgrades are available from our web site. Provides new features and support for the latest devices.
- Flash memory technology.
- Made in the USA.
- One-year limited warranty.

The UltraLink Advantage...

UltraLink sets a new standard for the remote management of server room environments. It allows you to access your computers and servers locally, across your network, or by dial-up from anywhere in the world. Connect the unit to a Rose Electronics KVM switch and you now have access to as many as 1,000 computers or servers.

The UltraLink is easy to install and configure. Connect the unit to a standalone computer or KVM switch and your Ethernet network, assign an IP address to the unit, install and configure the remote client software on a network Windows workstation and connect to the UltraLink.

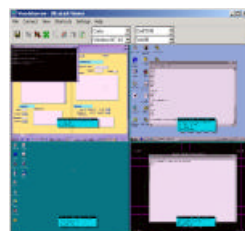
The more powerful workstations can connect to multiple UltraLinks and display each connection in a quad screen window.

The sophisticated scaling feature allows you to position any size image of your server's video anywhere on your screen. With this feature, you can monitor servers while working on other tasks in another window.

The dual and quad models contain two or four independent units in a rack mountable chassis. Typically, the dual and quad models are connected to the KVM inputs of a switch. This provides multiple users remote access to the servers.

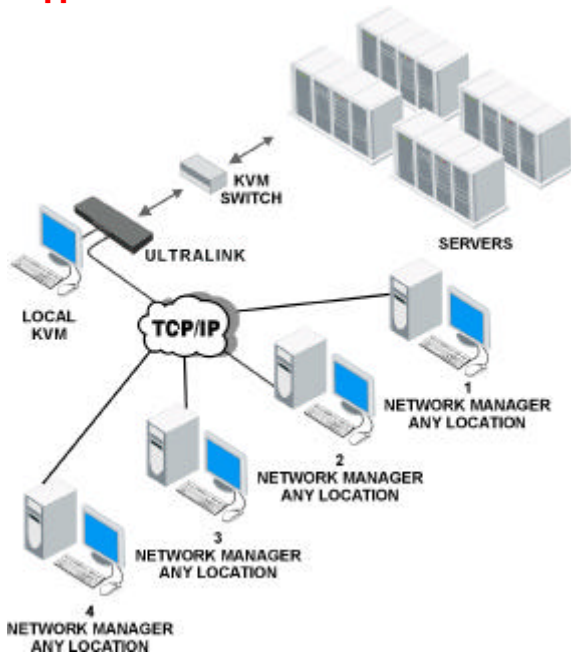
The Viewer remote client program is designed to simplify accessing the remote computers. Using a pull-down menu, select the UltraLink to connect to and click on the connect icon. After completing the secure login, you will see a beautiful, high-quality image of the remote computer.

A video resolution of 1280 x 1024 is supported for access not only to PC's but also Sun and other high-resolution computers.



Viewer - Quad screen view

Typical application



Introduction The UltraLink is a versatile and powerful product that extends the range of access to your computers and servers to anywhere in the world. Its advanced design makes it compatible with most KVM switches and computers.

Installation The UltraLink is very easy to install and configure. Just connect the unit to your network, a local KVM station, and a standalone computer or KVM switch. Assign an IP address to the unit and your done. Next, run the remote client Viewer program on a network workstation. Enter the UltraLink's assigned IP address and other configuration parameters, save it, and the workstation is ready to access the UltraLink.

Operation All access to the UltraLink is through the remote client Viewer. Drop-down menus provide a selection list of UltraLink locations that can be connected to. Once connected, you will see the computer's video and have complete control over that computer.

Viewer windowing The remote client viewer can be adjusted to any size. This feature allows you to place a scaled Viewer's image in the corner of your screen and monitor a server while working on other tasks in another window.

Security The UltraLink is designed with the highest regard for security. Remote access requires a user ID and password. All transmissions to and from the Viewer and UltraLink are encrypted with the latest SSL technology. Login timeout and lock out for repeated attempts to enter the password add to the security of the system.

Quad screen mode With the UltraLink connected to a KVM switch, you can view four servers at one time. The four connected servers are viewed in real time and are automatically scaled to fit their quadrant of the screen.

Color modes and resolution Full 16-bit color video is supported. You can view the video in black and white, gray scale, color, or use progressive color rendering.

Mouse cursors The UltraLink uses a one-mouse cursor system in a very intuitive style to access the remote connection or an application on your desktop.

Video resolution Unlike other products, the UltraLink automatically adjusts to the connected computers video. It supports a video resolution up to 1280 x 1024 @ 85 Hz which allows you to access the standard Sun computer resolutions.

Flash Memory To support the latest devices and provide continuing features and support, UltraLink contains flash memory. We provide free lifetime firmware upgrades from our web site at www.rose.com.

Part Numbers

UL-LV3	Low-Cost Single remote access unit
UL-V3	Single remote access unit
UL-DV3	Dual remote access unit
UL-QV3	Quad remote access unit
RM-Umn	Rack mount kit for UL-LV3 nn=19", 23", or 24"
RM-UBnn	Rack mount kit for 1U chassis nn=19", 23", or 24"
RM-UCnn	Rack mount kit for 2U chassis nn=19", 23", or 24"
CAB-CXVSMM005	5' UltraLink to KVM switch cable
CAB-CX0606C005	5' UltraLink to CPU cable
SW-ULV3	UltraLink viewer software on 3.5 floppy (2 disks)

Specifications

Dimensions	Lite - 8.9" W x 7.00" D x 1.75" H (1U) 22.6 W x 17.8 D x 4.4 H (cm)
	Single - 16.7" W x 7.00" D x 1.75" H (1U) 42.4 W x 17.8 D x 4.4 H (cm)
	Dual - 16.7" W x 7.00" D x 1.75" H (1U) 42.4 W x 17.8 D x 4.4 H (cm)
	Quad - 16.7" W x 7.00" D x 3.50" H (2U) 42.4 W x 17.8 D x 8.9 H (cm)
Weight	Lite - 4.1lbs (1.86 kg) Single - 8 lbs (3.6 kg) Dual - 9 lbs (4.1 kg) Quad - 11 lbs (5.0 kg)
Power	Auto Switching, 90 - 240 VAC, 130 watts
Connectors	Power: IEC 320 standard receptacle Local KVM: Video - HD15F, Keyboard - MD6F Mouse - MD6F Switch or computer : DB25 female Ethernet port: RJ45 Serial port: DB9 male
Video bandwidth	150Mhz
Chassis	Electro galvanized steel, black powder coated
Controls	Power On / Off Switch
Indicators	LEDs: Power, Net, Serial, Local, Ethernet link, 10/100MB Ethernet speed
Environmental	0°- 45° C, 5%-80% non-condensing rel. humidity
Approvals	FCC, UL, cUL, TUV, CE, VCCI

UltraLink rear connections



UltraLink rear panel

